

ST. THERESE DE LISIEUX

A PORTION OF THE ORANGE POINT PLANNED UNIT DEVELOPMENT
LYING IN SECTION 26, TOWNSHIP 44 SOUTH, RANGE 41 EAST,
VILLAGE OF WELLINGTON, PALM BEACH COUNTY, FLORIDA.
SHEET 2 OF 2 AUGUST, 2002

ORANGE POINT SECTION 23
(PLAT BOOK 79, PAGES 127-132)

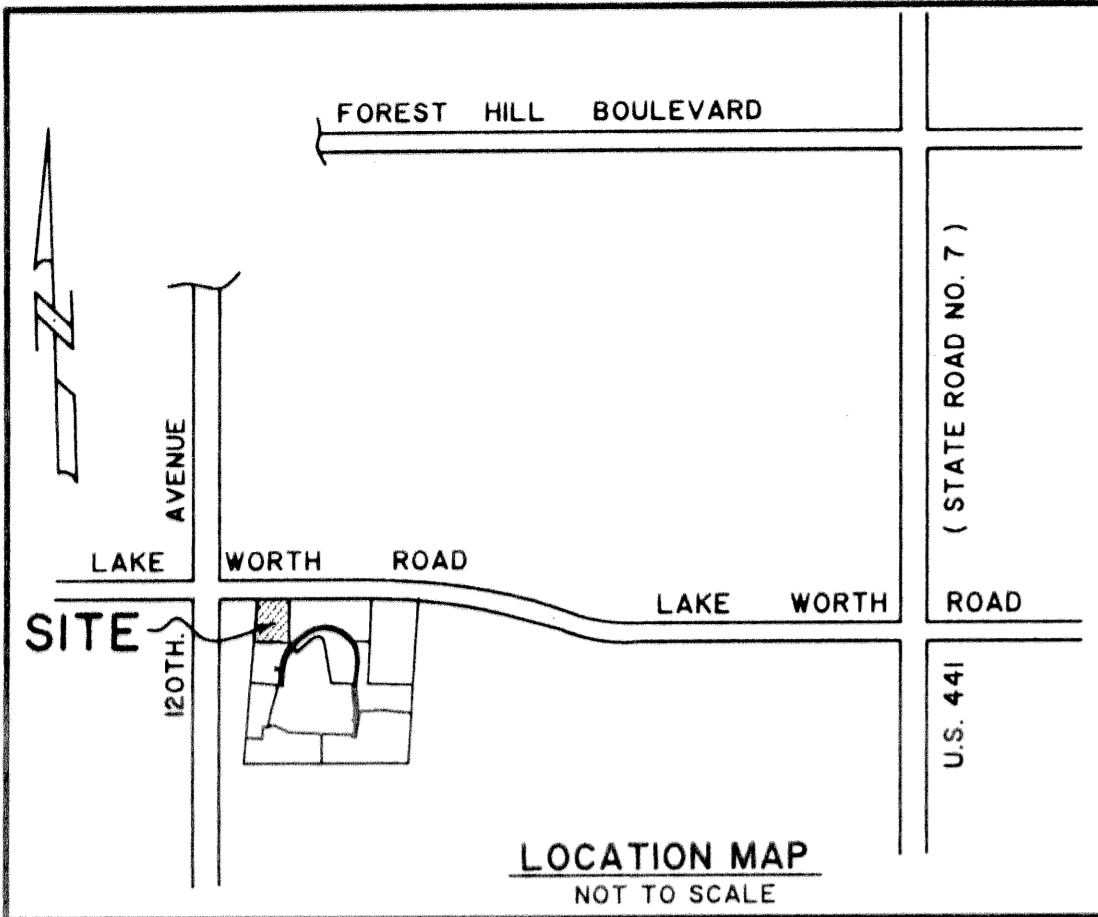
C/L ISLES VIEW DRIVE
(PLAT BOOK 79, PAGES 127-132)

FD. P.B.C. BRASS
DISK AND C.M.
OW-79

N= 832440.3670
E= 908018.5420

S 89°19'50"E GRID
2843.16' GROUND

STATE OF FLORIDA SS
COUNTY OF PALM BEACH
THIS PLAT WAS FILED FOR RECORD AT _____
M., THIS _____ DAY OF _____ 2002
AND DULY RECORDED IN PLAT BOOK NO. _____
ON PAGE _____
DOROTHY H. WILKEN,
CLERK OF THE CIRCUIT COURT
BY _____ D.C.



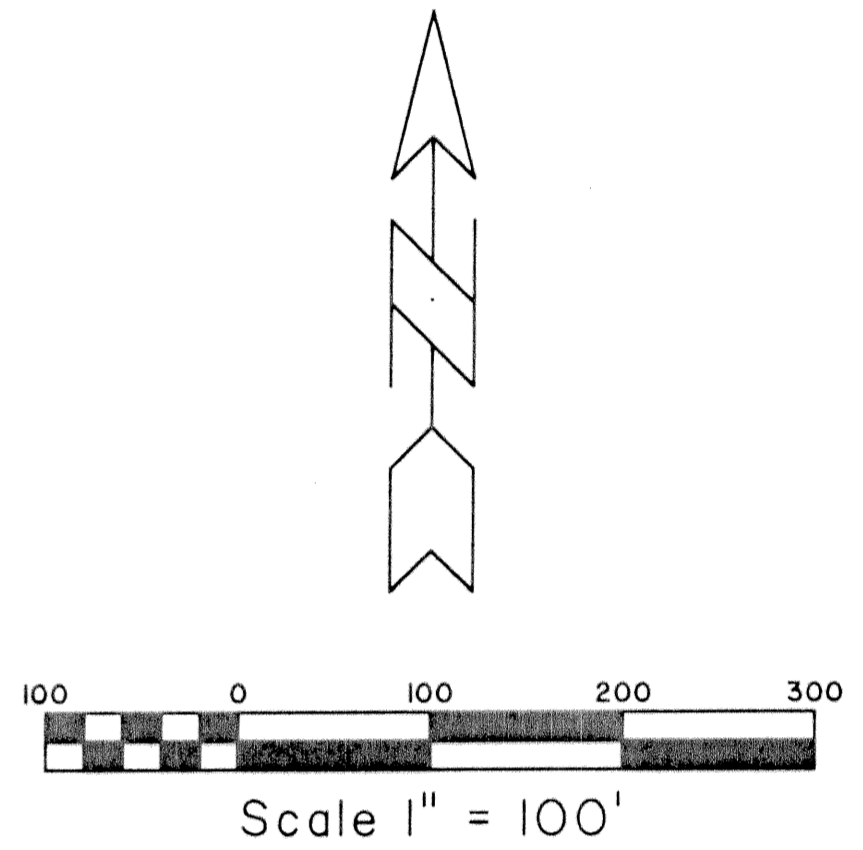
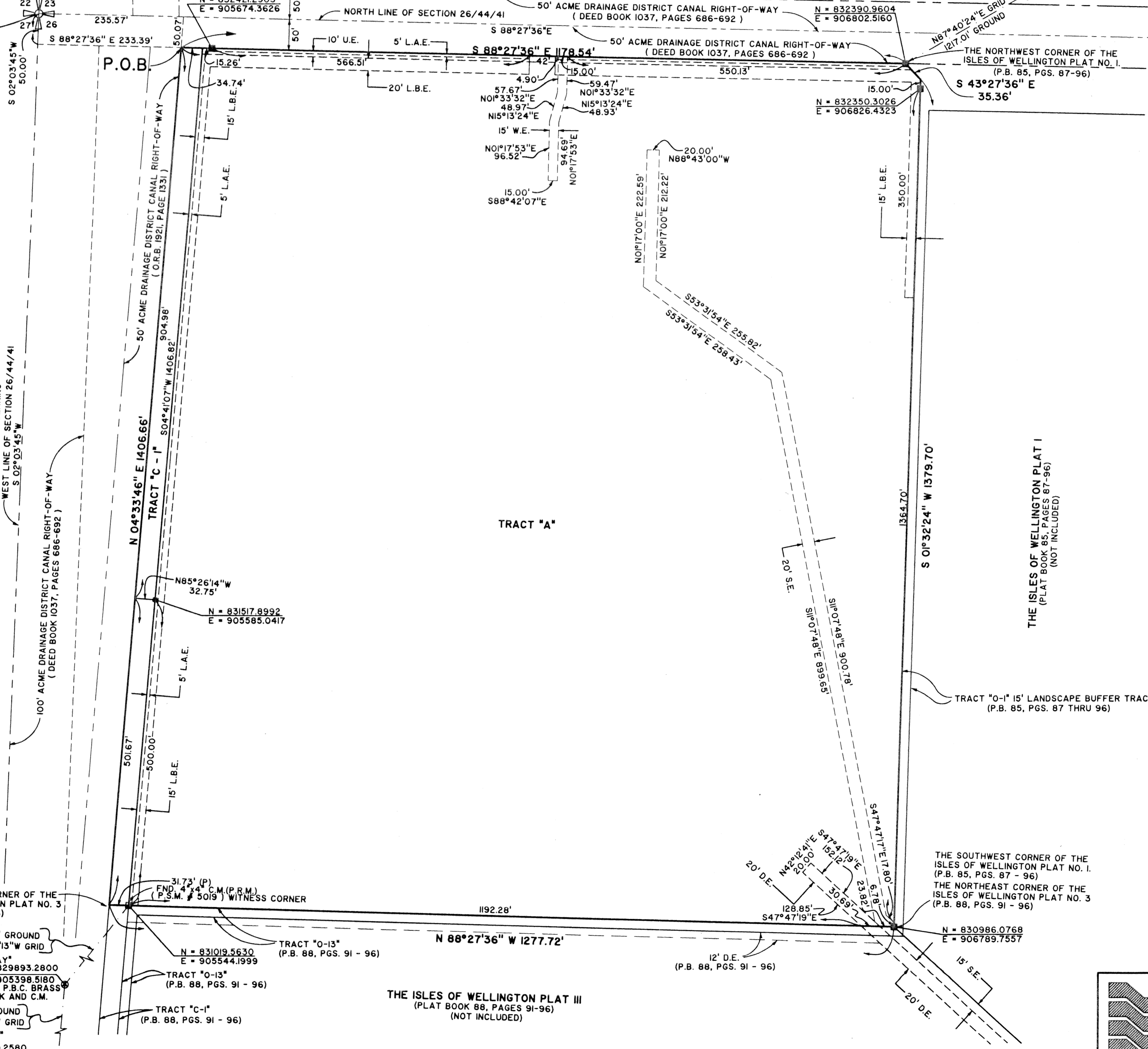
P.O.C.
NW CORNER OF SECTION 26
TOWNSHIP 44 S., RANGE 41 E.
(FALLS IN CANAL)
ACCEPTED SECTION CORNER
LIES 0.53' SOUTH AND 2.37' WEST
(S 79°39'35" W 2.50')
OF PUBLISHED PALM BEACH
COUNTY SECTION CORNER.

P.O.B.
N = 832421.2903
E = 905674.3626

N = 832390.9604
E = 906802.5160

N = 832350.3026
E = 906826.4323

N = 832407.1430
E = 910861.5450
FD. P.B.C. BRASS
DISK AND C.M.
OW-7H



COORDINATE NOTE:
STATE PLANE COORDINATES SHOWN ARE GRID DATUM, NAD 83 1990
ADJUSTMENT, FLORIDA EAST ZONE, COORDINATE SYSTEM 1983 STATE
PLANE, TRANSVERSE MERCATOR PROJECTION
LINEAR UNIT = US SURVEY FEET
ALL DISTANCES ARE GROUND
SCALE FACTOR = 1.0000139
GROUND DISTANCE X SCALE FACTOR = GRID DISTANCE

THE NORTHWEST CORNER OF THE
ISLES OF WELLINGTON PLAT NO. 3
(P.B. 88, PGS. 91 - 96)

THE SOUTHWEST CORNER OF THE
ISLES OF WELLINGTON PLAT NO. 1
(P.B. 85, PGS. 87 - 96)
THE NORTHEAST CORNER OF THE
ISLES OF WELLINGTON PLAT NO. 3
(P.B. 88, PGS. 91 - 96)

Landmark Surveying & Mapping Inc.
1850 Forest Hill Boulevard
Ph. (561) 433-5405 Suite 100 W.P.B. Florida
LB # 4396

ST. THERESE DE LISIEUX